



colour laser printer

Small size.  
Larger than life  
colour.



# Phaser<sup>®</sup> 6120

## Colour Laser Printer

**Fill your office with brilliant colour.**

Introducing the Xerox Phaser 6120 colour laser printer.

This printer offers legendary Phaser colour, outstanding media flexibility and a smart, compact design. Plus, it's so easy to install and use, it's ideal in any small office.



### Precise Phaser colour

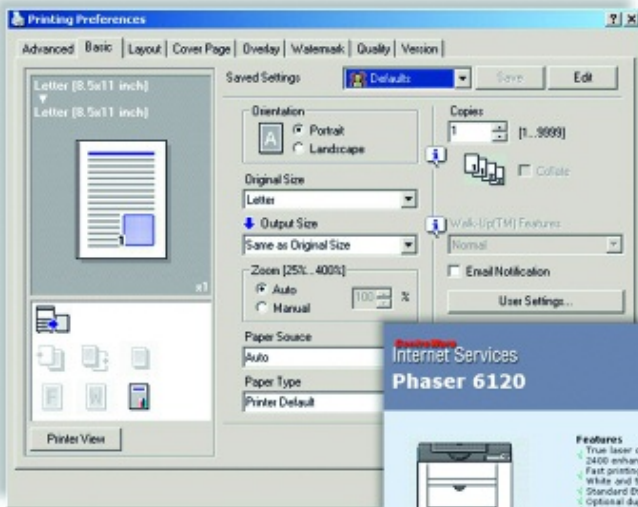
Why settle for "average" colour when you can get exceptional quality colour from the Xerox Phaser 6120 laser printer.

- Brilliant high resolution colour. Delivers amazing fine-line detail.
- Professional results. True-to-life colour and Pantone certification mean that you'll always get the colour you want.
- Affordable quality. This printer offers industry standard colour tools that colour professionals will appreciate.

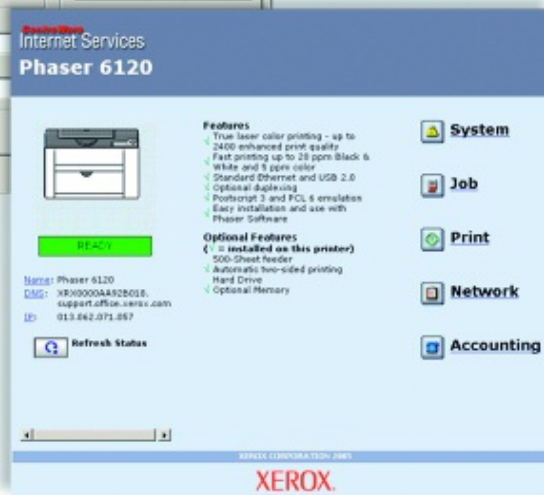
### Excellent media flexibility

When it comes to media handling, most small office lasers offer the bare minimum. Not the Phaser 6120 laser printer. It makes no compromises.

- Custom jobs made easy. This printer comes with a standard 200-sheet multipurpose tray that supports media as narrow as 10.2 cm and as long as 35.6 cm. And printing envelopes and labels is easy.
- One-sided printing not enough? This printer enables two-sided printing with an optional duplex unit.
- Presentations with impact. This printer produces vibrant, full-colour transparencies that make any presentation come to life.
- Large jobs welcome. High-output users can opt for an affordable 500-sheet feeder, bringing the total input capacity to 700 pages.



Printing setup is simple and automatic with the Phaser 6120.



CentreWare IS makes it easy to manage printers remotely.

## All around simplicity

From installation to everyday use, the Phaser 6120 printer is a no-hassle office solution.

- Easy, easy, easy. The Phaser 6120 was carefully engineered from the ground up to make it simple to use.
- Pre-installed toners and imaging unit make this printer virtually plug-and-play. It's so easy, you'll have it up and printing in minutes.
- Stay seated. The embedded CentreWare IS web server enables IT administrators and end-users to manage printers from their own computers.
- Troubleshooter. PrintingScout\* delivers instant printing alert information right to your workstation.

\*Available early 2006

- Smart design. No more reaching behind the printer to replace a print or drum cartridge. This printer was designed with front-access for user interventions. Even jam clearance is easy.
- Mac friendly. It has easy-to-use drivers for both PCs and Macs and supports all major print description languages, including PostScript 3, PCL® 6, PCL 5c and PCL 5e.
- No waiting. A powerful 300 Mhz processor rips images fast. Connect the way you want with parallel, high-speed USB 2.0 and 10/100Base-TX Ethernet – all standard.

## Designed for greatness

The Phaser 6120 makes a statement in any office. It offers excellent media handling with optional add-ons to enhance your office productivity. Who would have thought something so small could pack in so much?

- ① Variety encouraged. The 200-sheet multipurpose tray 1 supports a wide range of media; from transparencies to labels, card stock to envelopes.
- ② Business growing? Add on this optional 500-sheet feeder as your needs expand.
- ③ Print multiple jobs. The 200-sheet output tray allows for longer unattended operation.

Double up. This printer offers optional automatic two-sided printing.

Optional hard disk drive offers advanced features such as Saved Print and Secure Print, plus flawless collation on multi-set jobs.



Phaser 6120 printer shown with optional 500-sheet feeder

Call today. For more information, call **00 800 9000 9090** or visit us at [www.xerox.com/office](http://www.xerox.com/office).



CONFIGURATIONS		Phaser 6120N
<b>Speed</b>		Up to 5 ppm colour / 20 ppm black and white
<b>Duty Cycle</b>		Up to 35,000 pages / month
<b>Paper Handling</b>		
Paper Input	Standard	200-Sheet Multipurpose Tray 1
	Optional	500-Sheet Tray
Automatic 2-sided Printing		Optional
<b>Print</b>		
First Page Out		As fast as 22 seconds colour / 13 seconds black and white
Resolution		2400 Enhanced, 600 dpi
Processor		300 MHz Motorola FreeScale, 32 bit RISC
Language Support		PostScript 3, PCL® 5c / PCL 6 / PCL 5e emulations
Connectivity		Parallel, USB 2.0, 10/100Base-TX Ethernet
Memory (Std / Max)		128 MB / 640 MB
Internal Hard Drive		Optional (20 GB or greater)
Print Features		Booklet printing, Watermarks, Custom page sizes, Favourites (Driver macros), Scaling, Scale-to-fit, N-up printing, Forms, Toner levels, Built-in support links, Job retention features, PrintingScout® Alert Notification
<b>Warranty</b>		One year on-site

\*Available early 2006

## SPECIFICATIONS

### Network/Software

**Printer management** CentreWare® IS Embedded Web Server, PrintingScout Alert Notification, CentreWare Web

**Font capabilities** 139 Resident PostScript fonts and 81 PCL

**Printer drivers** Windows 98/Me/NT 4.0/2000/Server 2003/XP Pro/ XP Home SP 1 or greater, Mac OS 9.2/OS X version 10.2 or greater, Linux Red Hat/SuSe, Walk-up printing driver

**Language support** PostScript 3, PCL® 5c, PCL 6, PCL 5e emulations

### Paper handling

**Maximum input capacity** 700 sheets

#### Multipurpose Tray 1 (standard)

60 – 163 gsm, Transparencies, Labels, Envelopes, Card stock. Media sizes: Letter, Legal, Folio, Executive, Statement, Index card, A4, A5, A6, B5-ISO, B5-JIS, Envelopes: #10 Commercial, Monarch, DL, C5, C6

**500-Sheet tray (optional)** 60 – 90 gsm. Media sizes: Letter, A4. Custom sizes 92 x 148 mm to 216 x 356 mm

#### Automatic two-sided printing (optional)

(shipped with an additional 128 MB memory)  
75 – 90 gsm. Media sizes: Letter, A4, Folio Legal 13 in., Legal 14 in. from all trays

**Maximum output capacity** 200 sheets

### Special features

**PrintingScout®** Instantly displays pop-up help if attention is needed throughout print job

**Productivity tools** Booklet printing, Watermarks, Custom Page Size Default Registers, Favourites (Driver macros), Scaling and Scale-to-fit, N-Up Printing, Forms, Toner Levels, Built-in Support Links, Job Retention Features. Optional Hard Drive supports: font storage, forms, colour profiles, job accounting, electronic collation, PDF direct printing, proof print, saved print and secure print.

### Colour controls

**Colour standards** PANTONE®-approved solid-colour simulations. Postscript device-independent colour.

**Selectable print-quality modes** 2400 Enhanced; 600 dpi

### Operating

**Dimensions** width: 442 mm, height: 341 mm, depth: 395 mm, weight (with consumables): 20.2 kg; weight (packaged) 24.4 kg

**Environment** Temperature Non-operating: -20° – 40° C, Operating: 10° – 32° C; Relative Humidity: Non-operating: 10 – 85% RH, Operating: 10 – 80% RH

**Noise level** < 35 dB standby, < 54 dB running

**Electrical** 200 – 240 VAC / 100 – 127 VAC at 50/60 Hz; Consumption: Printing 450 W max (with SCF); Energy Saver: 35 W max, ENERGY STAR® qualified printer

**Regulatory** Listed to UL 60950-1/CSA 60950-1-03, 1st Edition. Class 1 Laser Product. FCC Part 15, Class B. CE marked in accordance with the Low Voltage Directive 73/23/EEC and EMC Directive 89/336/EEC. Section 508 ADA.

### Customer Support

One year on-site warranty, online web technical support and telephone support. Innovative service offerings include on-site and extended Service Agreements.

## SUPPLIES AND OPTIONS

Consumables	
<b>Standard-Capacity Toner Cartridges*</b>	
Cyan (1,500 pages)	113R00689
Magenta (1,500 pages)	113R00691
Yellow (1,500 pages)	113R00690
<b>High-Capacity Toner Cartridges*</b>	
Cyan (4,500 pages)	113R00693
Magenta (4,500 pages)	113R00695
Yellow (4,500 pages)	113R00694
Black (4,500 pages)	113R00692

\*Capacities are approximate, based on 5% coverage on an A4-sized page.

The toner cartridges are part of the Xerox Green World Alliance supplies recycling program. For more information, please visit the Green World Alliance web site at [www.xerox.com/gwa](http://www.xerox.com/gwa)

Routine Maintenance Items	
Imaging Unit	108R00691
(up to 20,000 pages black/up to 10,000 pages colour: assumes average job size of three pages.)	

Options	
500-Sheet Feeder	
Letter	097S03484
A4	097S03489
Hard Disk Drive	097S03485
Duplex Kit (includes 128 MB Memory)	097S03483

## Outstanding Media Capability

Take full advantage of the Phaser 6120 colour printer with our comprehensive Xerox Paper and Speciality Media portfolio, which includes a selection of papers, labels and transparencies that come in a variety of weights and sizes. For a current listing of all recommended printing media visit:

[www.xerox.com/office/6120supplies](http://www.xerox.com/office/6120supplies)

